



Steven M. Clouse WRC Headworks Enhancements Phase 2 Project
Solicitation No.: CO-00474-SM
Job No: 19-6504

ADDENDUM 1
October 29, 2021

To Bidder of Record:

This addendum, applicable to work referenced above, is an amendment to the bid proposal, plans and specifications and as such will be a part of and included in the Contract Documents. Acknowledge receipt of this addendum by entering the Addendum number and issue date on the space provided in submitted copies of the bid proposal.

CHANGES TO THE PLANS

1. Remove the following sheet and replace with the attached sheet:

- Sheet S-02 – Typical Details
- Sheet S-03 – Overall Plan

The remaining drawings shall remain the same.

END OF ADDENDUM

This Addendum, including this page, is three (3) pages with attachments in its entirety.

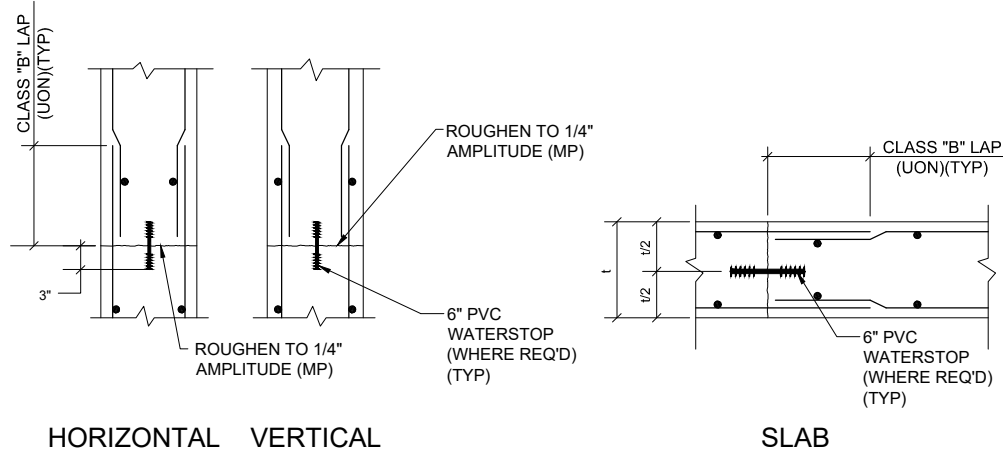
Attachments:

- Sheet S-02 (1 page total)
- Sheet S-03 (1 page total)

Javier Garcia, P.E.
Garcia Infrastructure Consultants, LLC

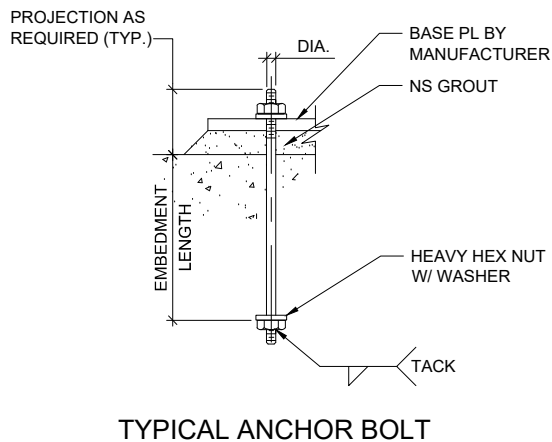


10/29/2021



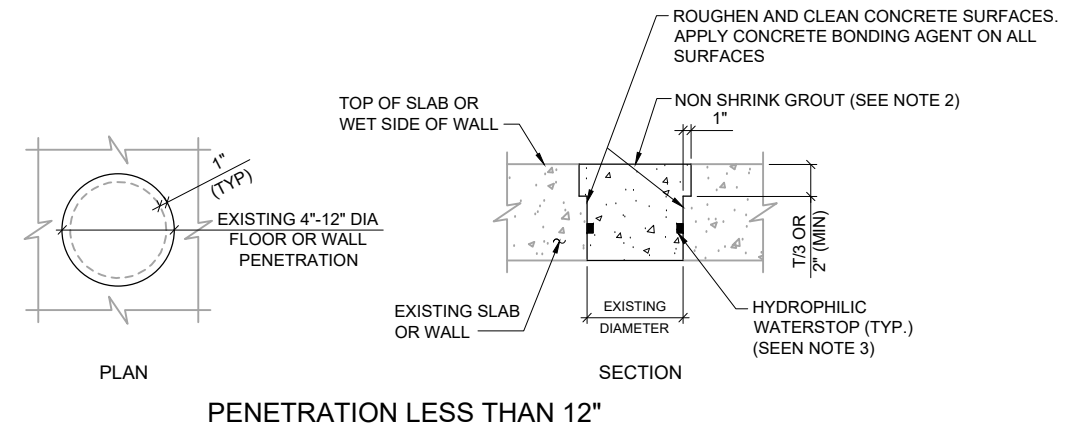
1 TYPICAL CONSTRUCTION JOINT DETAIL
S-02 SCALE: NOT TO SCALE

- NOTES:
- CONTINUE ALL REINFORCEMENT BARS THROUGH JOINTS.
 - ROUGHEN CJ AS SPECIFIED.
 - REFER TO SPECIFICATIONS FOR CONSTRUCTION JOINT SPACING.



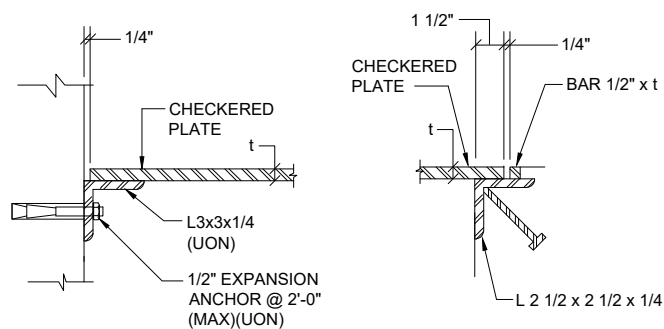
2 DETAIL
S-02 SCALE: NOT TO SCALE

- NOTES:
- REFER TO SPECIFICATIONS OR CONTRACT DRAWING DETAILS FOR ANCHOR BOLT EMBEDMENT DEPTH REQUIREMENTS. FOR EQUIPMENT ANCHOR BOLT DIAMETER AND EMBEDMENT SHALL BE AS SHOWN OR AS REQUIRED BY EQUIPMENT MANUFACTURER.
 - REFER TO SPECIFICATIONS, CONTRACT DRAWING DETAILS OR MANUFACTURER'S DETAILS FOR ANCHOR BOLT MATERIAL REQUIREMENTS.



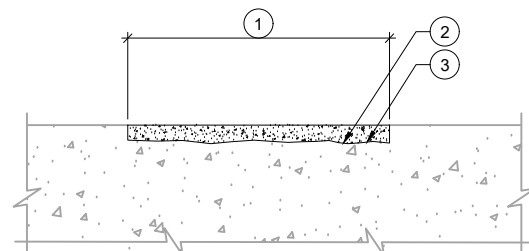
3 TYPICAL PENETRATION REPAIR DETAIL
S-02 SCALE: NOT TO SCALE

- NOTES:
- FOR PENETRATIONS LARGER THAN 2'-0" USE "TYPICAL OPENING CLOSURE DETAIL".
 - FOR OPENINGS LESS THAN 4" USE CLASS III NON-SHRINK EPOXY GROUT.
 - PROVIDE WATERSTOP WHERE HOLES IN CONTACT WITH LIQUID OR SOIL.
 - DETAIL APPLIES TO LINED HOLES. REMOVE EMBEDDED MATERIALS PRIOR TO REPAIRING PER DETAILS AND SPECIFICATIONS.



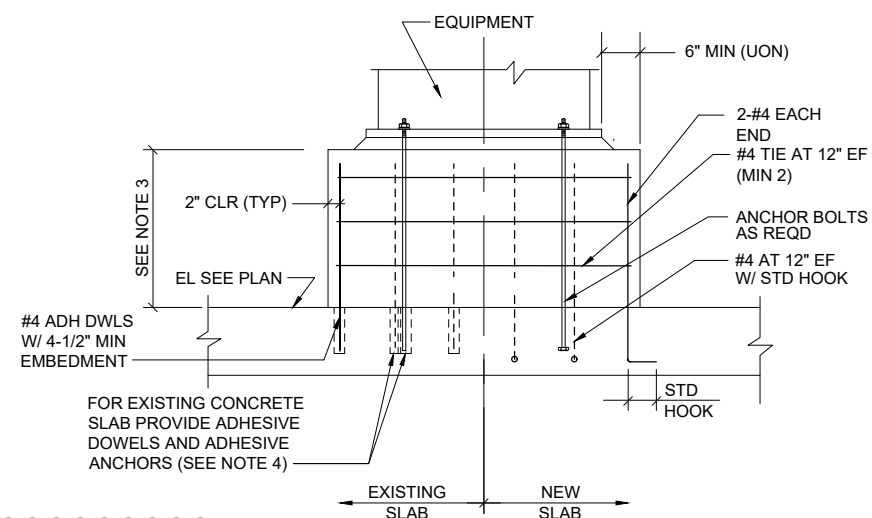
4 TYPICAL CHECKERED PLATE SUPPORT DETAILS
S-08 SCALE: NOT TO SCALE

- NOTES:
- PROVIDE TYPICAL SUPPORT AS SHOWN FOR ALL PLATE SUPPORT.
 - PROVIDE SUPPORT ANGLE AND ANCHOR STUD OF THE SAME MATERIAL AS THE PLATE.



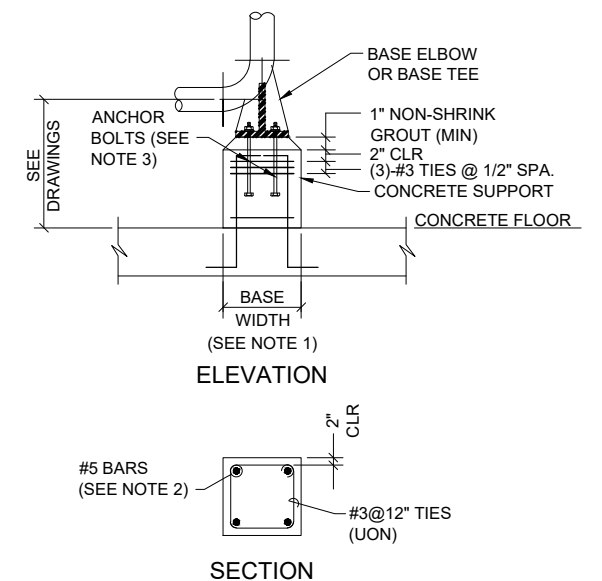
5 TYPICAL CONCRETE PAD REPAIR DETAIL
S-02 SCALE: NOT TO SCALE

- REMOVE EXISTING CONCRETE PADS AS SHOWN IN DEMOLITION DRAWINGS.
- CLEAN, ROUGHEN AND APPLY BONDING ADHESIVE.
- APPLY REPAIR MATERIALS AS RECOMMENDED BY MANUFACTURER. FINISH TO MATCH EXISTING CONCRETE SURFACE.



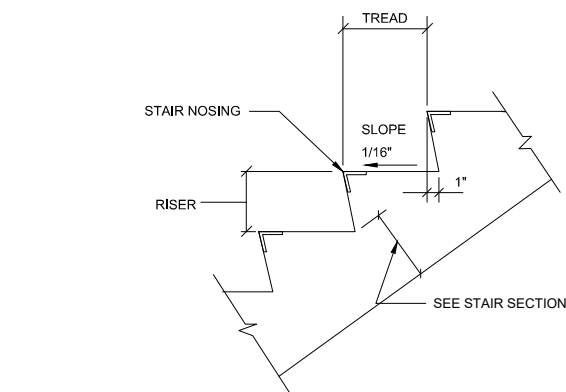
6 TYPICAL CONCRETE SUPPORT DETAIL
S-02 SCALE: NOT TO SCALE

- NOTES:
- SUPPORT TO BE 12" THICK MINIMUM. COORDINATE FINAL THICKNESS WITH APPROVED EQUIPMENT SHOP DRAWINGS PRIOR TO SHOP DRAWING SUBMITTAL.
 - DRILL HOLE DIAMETER AND DEPTH IN EXISTING SLAB PER MANUFACTURER'S REQUIREMENTS FOR APPROVED ADHESIVE ANCHORAGE SYSTEM.
 - HEIGHT SHALL BE AS SHOWN ON THE PLANS, BUT NO LESS THAN 6 INCHES.



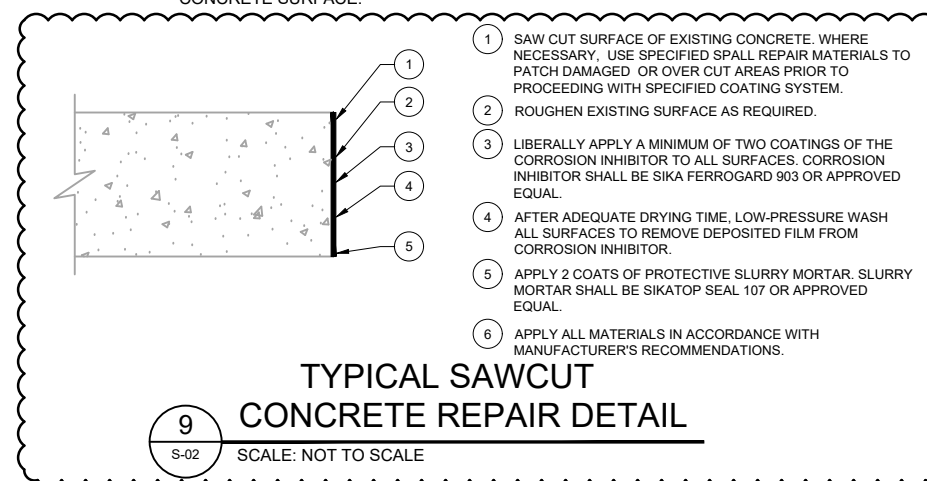
7 CONCRETE PEDESTAL DETAIL
S-02 SCALE: NOT TO SCALE

- NOTES:
- BASE WIDTH SHALL BE A MINIMUM OF BASE ELBOW OR BASE TEE WIDTH PLUS 2 INCHES ON ALL SIDES OR A WIDTH TO PROVIDE A MINIMUM EDGE DISTANCE OF 5 INCHES ON ALL ANCHOR BOLTS.
 - PROVIDE #5 REINFORCING BARS EQUALLY DISTRIBUTED ON ALL FACES OF SUPPORT PEDESTAL. PROVIDE:
 - 8-#5 BARS FOR A BASE WIDTH LESS THAN 16 INCHES.
 - 8-#6 BARS FOR A BASE WIDTH OF 16 INCHES BUT NOT LESS THAN 20 INCHES.
 - 8-#7 BARS FOR A BASE WIDTH OF 20 INCHES OR GREATER.
 - ANCHOR BOLT SIZE PER PIPE SUPPORT REQUIREMENT.



8 TYPICAL TREAD AND RISER DETAIL
S-02 SCALE: NOT TO SCALE

- NOTE:
- PROVIDE SAFETY NOSING AS SPECIFIED.

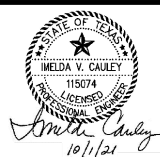


9 TYPICAL SAWCUT CONCRETE REPAIR DETAIL
S-02 SCALE: NOT TO SCALE

- SAW CUT SURFACE OF EXISTING CONCRETE. WHERE NECESSARY, USE SPECIFIED SPALL REPAIR MATERIALS TO PATCH DAMAGED OR OVER CUT AREAS PRIOR TO PROCEEDING WITH SPECIFIED COATING SYSTEM.
- ROUGHEN EXISTING SURFACE AS REQUIRED.
- LIBERALLY APPLY A MINIMUM OF TWO COATINGS OF THE CORROSION INHIBITOR TO ALL SURFACES. CORROSION INHIBITOR SHALL BE SIKAFERROGARD 903 OR APPROVED EQUAL.
- AFTER ADEQUATE DRYING TIME, LOW-PRESSURE WASH ALL SURFACES TO REMOVE DEPOSITED FILM FROM CORROSION INHIBITOR.
- APPLY 2 COATS OF PROTECTIVE SLURRY MORTAR. SLURRY MORTAR SHALL BE SIKATOP SEAL 107 OR APPROVED EQUAL.
- APPLY ALL MATERIALS IN ACCORDANCE WITH MANUFACTURER'S RECOMMENDATIONS.

9/30/2021 W:\ACAD\PROJ\30036983-3\SAWS-2-SHEETS\06-STRUCTURAL\30036983-S-02.DWG

Proj. No.:	1045	1	10/1/21	ADDED DETAIL 9 (ADDENDUM NO. 1)
Designed:	I. CAULEY			
Drawn:	J. RAY			
Approved:	I. CAULEY			
File:	30036983-S-02			
Revision	Date	Description		



Garcia Infrastructure Consultants, LLC
Texas Firm No. F-17794
12042 Blanco Rd., Ste. 203
San Antonio, Texas 78216
Ph. (210) 437-0323

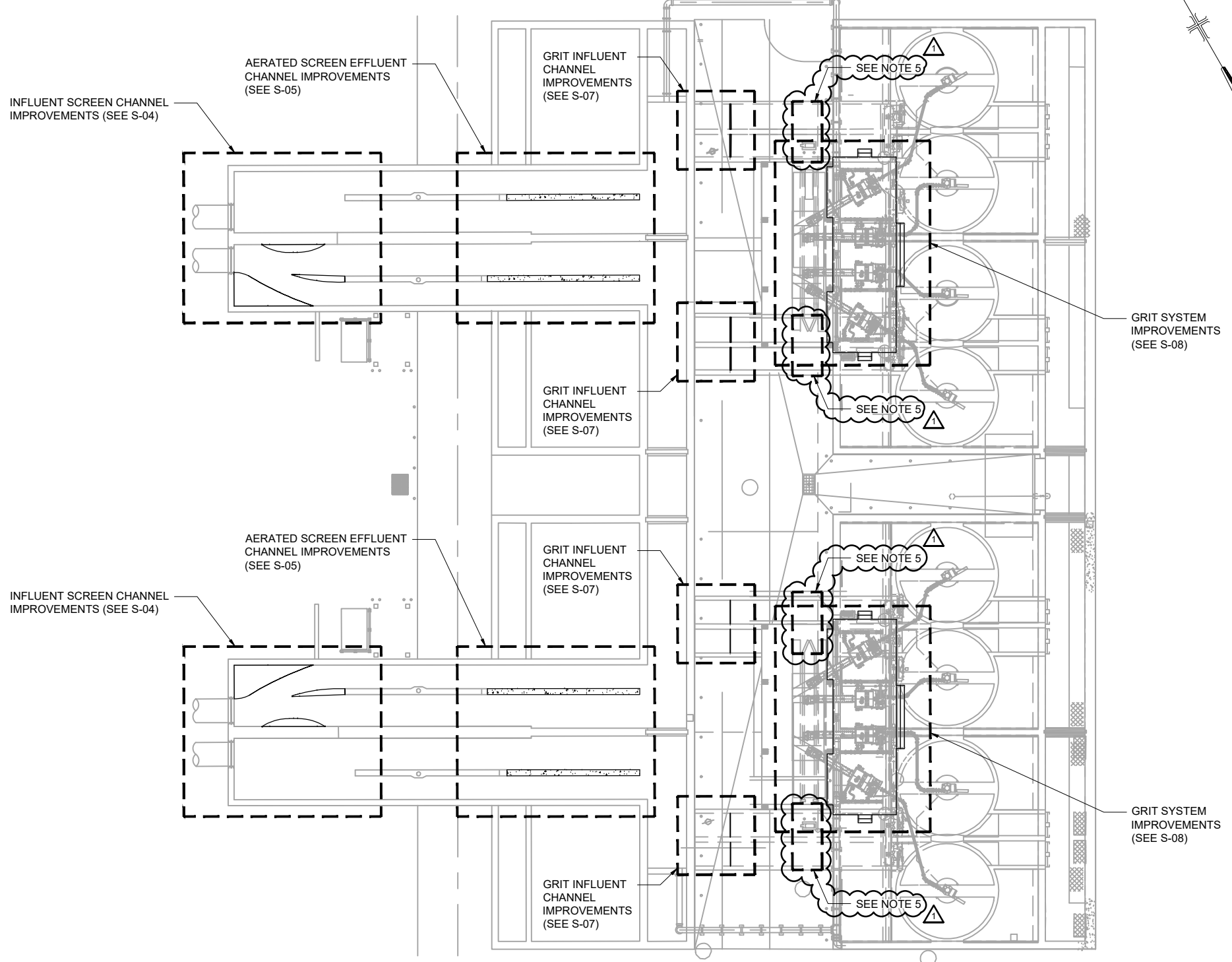
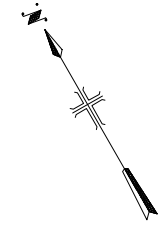


SAN ANTONIO WATER SYSTEM
SMCWRG HW ENHANCEMENTS
PHASE 2
SAWS Job No. 19-6504
San Antonio, Texas

TYPICAL DETAILS

S-02

100% SUBMITTAL



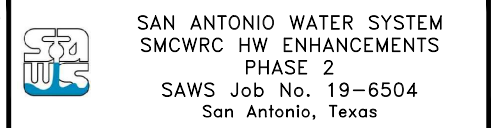
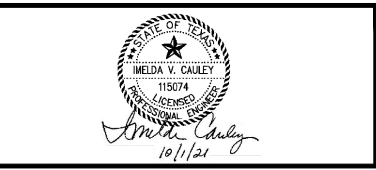
PARTIAL PLAN
SCALE: 1/16" = 1'-0"
0 8' 16' 32'

- NOTES:
1. FOR GENERAL NOTES AND TYPICAL DETAILS SEE SHEETS S-01 AND S-02.
 2. PROVIDE ADDITIONAL REINFORCING AT OPENINGS AND WALL INTERSECTIONS AS SHOWN IN THE TYPICAL DETAILS.
 3. FOR SIZE AND LOCATION OF EQUIPMENT AND EMBEDDED ITEMS, REFER TO OTHER SHEETS.
 4. CONTRACTOR SHALL REMOVE ALL DEBRIS, GRIT AND ORGANIC MATERIALS FROM PROJECT AREA PRIOR TO COMMENCING WORK OPERATIONS. PRESSURE WASH ALL CONCRETE SURFACES IN CONTACT WITH NEW GROUT OR WALLS. EXTENT OF DEBRIS, GRIT AND ORGANIC MATERIALS IS UNKNOWN. BIDDERS SHALL ASSUME THE DEPTH OF SUCH MATERIALS TO BE A MINIMUM OF 12-INCHES.

△ 5. PROVIDE SAMPLING CORES AS REQUIRED BY MANUFACTURER. NUMBER OF CORES AND LOCATIONS SHALL BE DETERMINED BY APPROVED GRIT TESTING COMPANY. CONTRACTOR SHALL LOCATE REINFORCING USING NON-DESTRUCTIVE METHODS IN THE VICINITY OF THE PROPOSED CORES. DO NOT CUT OR DAMAGE EXISTING REINFORCING DURING CORING OPERATIONS. SUBMIT RESULTS OF REBAR LOCATION AND CORING PLAN TO ENGINEER FOR APPROVAL PRIOR TO PERFORMING CORE WORK. FINISH CORE SURFACE PER "SAWCUT REPAIR DETAIL" ON S-02. AT THE END OF SAMPLING, PROVIDE STAINLESS STEEL COVERS FOR EACH CORING LOCATION THAT ARE CAPABLE OF SUPPORTING HS-20 LOADING.

9/30/2021 W:\ACAD\PROJ\30036983-SAWS\2-SHEETS\06-STRUCTURAL\30036983-S-03.DWG

Proj. No.:	1045	1	10/1/21	ADDED SAMPLING CORE LOCATIONS (ADDENDUM NO. 1)
Designed:	R. ZAYAS			
Drawn:	J. RAY			
Approved:	I. CAULEY			
File:	30036983-S-03			
Revision	Date	Description		



OVERALL PLAN

S-03
ADDENDUM 1 SHT 22 OF 57